

some representative films:

- ◆ Persuasion (2007)



Crinoline

◆ 1848- 1870

◆ the beginning of Victoria's reign



some representative garments:

MEN

antimacassar

braces

chimneypot/stovepipe hat

dundrearies/Piccadilly weepers

frock coat

Gladstone collar

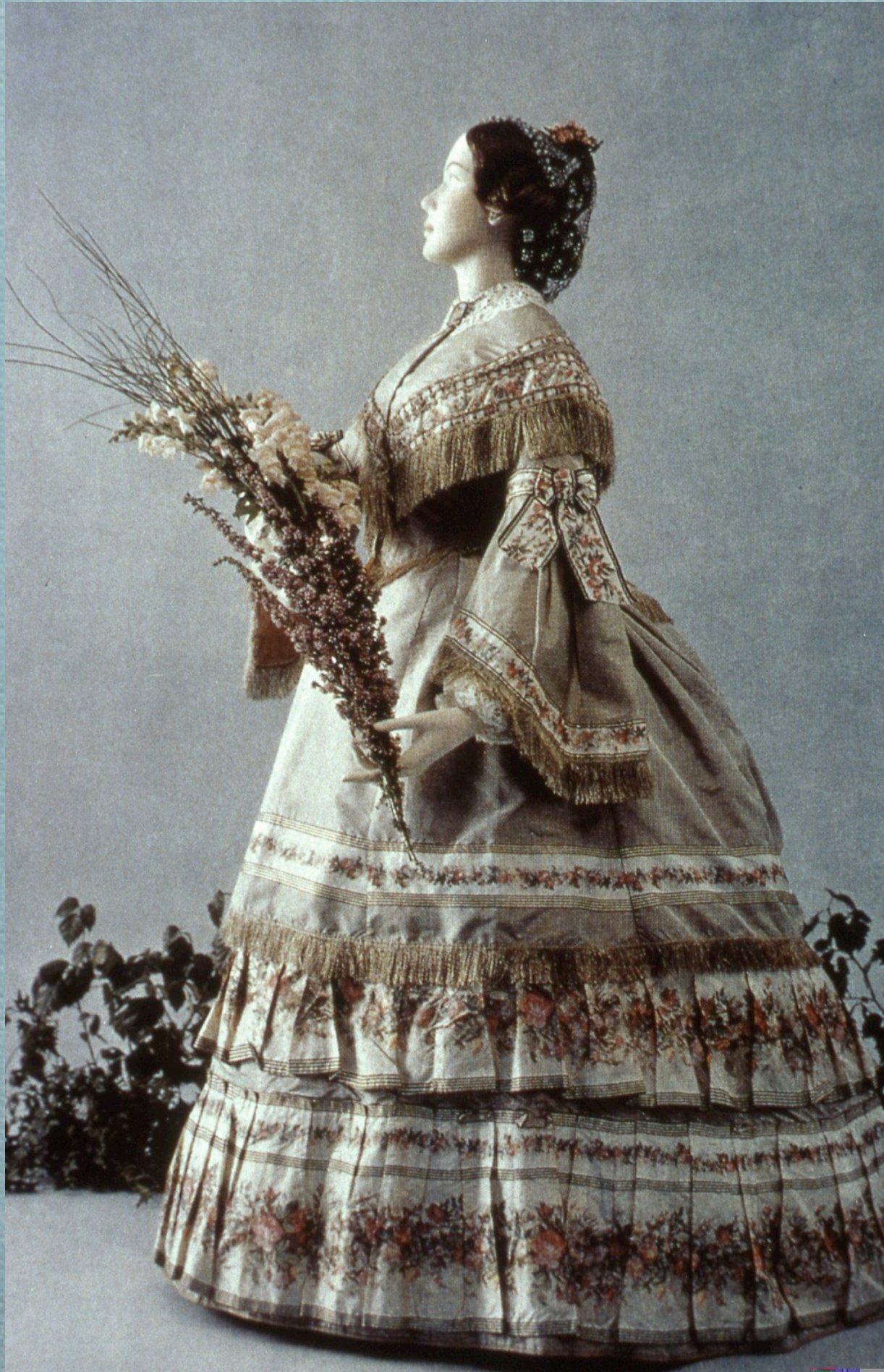
macassar oil

mutton chops

Prince Albert

raglan coat

waistcoat



some representative garments:

WOMEN

basque

bertha

bloomers

cage américaine/cage crinoline/hoop

chignon

crinoline

pagoda sleeve

pros

1. *Beautiful*
2. *Elegant*
3. *Graceful*
4. *Familiar*
5. *Lots of research material*
6. *Provides lots of “social” business to play’s action*
7. *Invention of the “sack suit” for men*



cons

1. *Cumbersome understructures*
2. *Women must “relearn” how to walk*
3. *Fussy*
4. *Lots of “pieces”*
5. *Hoops are costly*





And it provides a lovely home for your
pets...

plays best costumed in this style:

- ◆ *Camille* by Alexander Dumas, fils
- ◆ *Trelawney of the Wells* by Arthur Wing Pinero
- ◆ *A Month in the Country* by Ivan Turgenev
- ◆ *Desire Under the Elms* by Eugene O'Neil
- ◆ *Uncle Tom's Cabin* by Harriet Beecher Stowe
- ◆ *The Little Minister* by J.M. Barrie
- ◆ *The Weavers, a Drama of the Forties* by Gerhardt Hauptmann

some representative films:

- ◆ A Christmas Carol (1999)
- ◆ Anna and the King (1999)
- ◆ The Heiress (1949)
- ◆ Glory (1989)
- ◆ Cold Mountain (2003)
- ◆ Hell on Wheels (AMC series)
- ◆ Gone with the Wind (1939)



Bustle

◆ 1870-1890

◆ the bustle era has 3 distinct silhouettes, be sure you narrow your choice to a specific set of years

some representative
garments:

MEN

braces
derby
sack suit
wing collar





some representative garments:

WOMEN

balayouse/dust ruffle/street sweeper

basque

bustle

camisole

Eton jacket

fishtail

mousquetaire glove

pompadour

pros

- 1. My personal favorite*
- 2. Lots of societal stage business*
- 3. Elegant*
- 4. Lots of research available*
- 5. Not lots of wig requirements*
- 6. Sources available*
- 7. Commercial patterns available*
- 8. Sack suits still in vogue*



cons

1. *Trains*
2. *Bustles and their cages*
3. *Stiff*
4. *Restrained*
5. *Lots of required stage business*
6. *Era of men's facial hair*
7. *Complicated constructions*
8. *Piccadilly weepers*





Nothing is better than a relaxing day at the beach...

plays best costumed in this style:

- ◆ *Hedda Gabbler* and *A Doll's House* by Henrick Ibsen
- ◆ *The Elephant Man* by Bernard Pomerance
- ◆ *Jekyll and Hyde* by Steve Cuden and Frank Wildhorn

some representative films:

- ◆ Age of Innocence (1993)
- ◆ Gaslight (1944)
- ◆ From Hell (2001)
- ◆ Gangs of New York (2002)
- ◆ Miss Julie (1999)
- ◆ Sweeney Todd (2007)
- ◆ The House of Mirth (2000)



The Turn of the Century

◆ 1890-1901



some
representative
garments:

MEN

bulldog toe
Buster Brown collar
orby cutaway
oxford
peg-top trousers
ulster



some representative garments:

WOMEN

Balkan blouse
beau-catcher
bertha
bishop sleeve
bloomers
bust improver
chemisette
dog collar/choker
Gibson girl
leg-o-mutton sleeve
Lillian Russell dress
marabou
pompadour
switch

pros

- 1. Pretty*
- 2. Graceful*
- 3. Forgiving to figure types*
- 4. Familiar*
- 5. Lots of available sources*
- 6. Easy to reproduce from a thrift shop*
- 7. Lots of commercial patterns available*
- 8. Lots of different clothing options available to help create character*



cons

1. *Still trained (somewhat)*
2. *Women's sleeves can be overwhelming*
3. *Facial hair on men*
4. *Fabrics still expensive*
5. *Garments require large fabric yardages*





Note that her suspenders are connected to her corset as well as her stockings...

plays best costumed in this style:

- ◆ *Pygmalion* by George Bernard Shaw
- ◆ *A Long Day's Journey into Night* by Eugene O'Neill
- ◆ *The Dead*

some representative films:

- ◆ Gigi (1958)
- ◆ Mrs. Dalloway (1997)
- ◆ Mrs. Soffel (1984)
- ◆ Sherlock Holmes and the Case of the Silk Stocking (2004)
- ◆ The Dead (1987)



Edwardian

◆ 1901- 1911



204 *Balloon race at Ranelagh, by Arthur Barrett, 1908*

some
representative
garments:

MEN

boater
Buster Brown collar
peg top trousers
spats



166. The Family of George Campbell Swinton at Pont Street, London,
1901

some
representative
garments:

WOMEN

bishop sleeve
bust improver
chemisette
Gainsborough hat
pompadour

pros

1. *Graceful*
2. *Sack suits still on*
3. *Can be faked without wigs*
4. *Familiar*
5. *Lots of sources available*
6. *Commercial patterns available*
7. *S-curve can be faked*



cons

1. *S-curve is hard on the back if done correctly*
2. *Still retain train*
3. *Expensive fabrics*
4. *Garments require extensive yardage*



1905: the body muff

- ◆ It is also important to note that at this time women wore “hobblers” under their skirts to prevent too long a stride in their step.
- ◆ They wore these while marching for the right to vote...



plays best costumed in this style:

- ◆ *My Fair Lady* by Lerner and Lowe
- ◆ *Picnic at Hanging Rock*

some representative films:

- ◆ A Little Princess (1995)
- ◆ Anne of Green Gables (1999)
- ◆ Black Adder Goes Forth (BBC series)
- ◆ Picnic at Hanging Rock (1975)
- ◆ Somewhere in Time (1980)
- ◆ The Road to Wellville (1994)
- ◆ The Three Sisters (1966)



1910s and World War I

◆ World War I: 1914-1918



some representative garments:

MEN

boutonnière
fedora
spats
tyrolean hat

*Album
Blouses Nouvelles*



some representative garments:

WOMEN

camisole neckline

cloche

ferris-waist

hobble skirt

hobbler

Irene Castle bob

middy blouse

off-the-face/halo hat

peg-top

Peter Pan hat

profile hat

shawl collar

shingle bob

tonneau silhouette

pros

- 1. Lots of research material available*
- 2. Commercial patterns available*
- 3. Sources available*
- 4. Doesn't require as much fabric, etc*
- 5. Contemporary menswear is a viable option*



cons

1. *Not figure forgiving for women*





1910: pacing trouser
made from genuine seaweed

plays best costumed in this style:

- ◆ *Titanic* by Maury Yeston and Peter Stone
- ◆ *Music Man* by Meredith Willson

some representative films:

- ◆ All Quiet on the Western Front (1979)
- ◆ Boardwalk Empire (HBO series)
- ◆ Daddy Long Legs (1919)
- ◆ Legends of the Fall (1994)
- ◆ Titanic (1997)
- ◆ Music Man (2003)
- ◆ My Fair Lady (1964)



1920s

some representative garments:

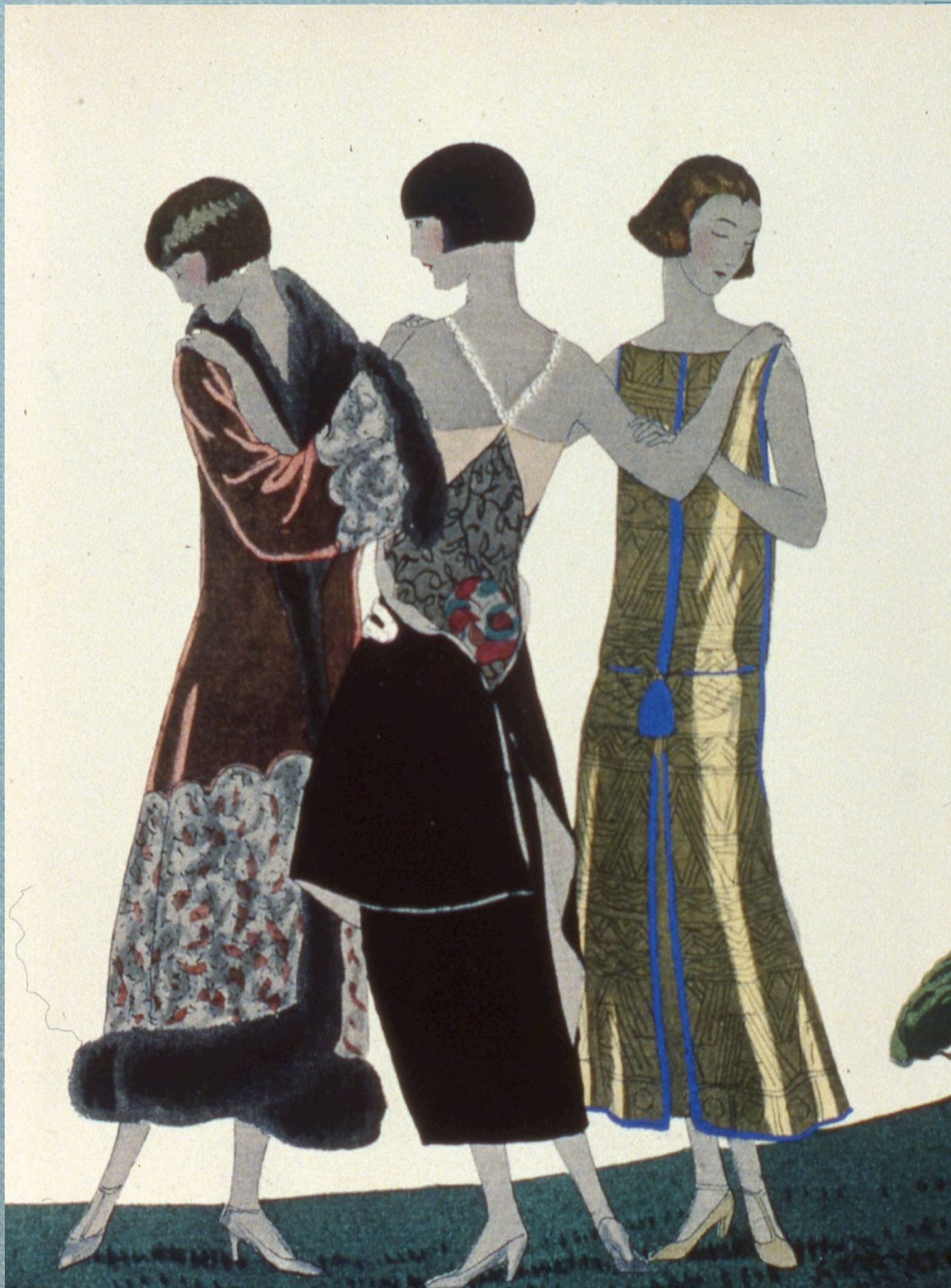
MEN

Norfolk jacket
patch pocket
planter's punch



some representative garments:

WOMEN



bandeau

bobbed hair

chemise dress/ tube dress

dolman wrap

Irene Castle bob

middy blouse

shingle bob

pros

1. *Menswear much as today*
2. *Contemporary clothes can be easily converted*
3. *Commercial patterns readily available*
4. *Smaller amounts of materials build to construct*
5. *Sources available to rent or buy*
6. *Photographic research available*



cons

1. *Not a “figure forgiving” line for women*
2. *Everyone thinks all ‘20s clothes have fringe*
3. *Often requires wigs*



1927: ice beaded dresses

- ❖ Invented by Miss Isabella Grant of Cincinnati, Heiress to the Grant Frozen Novelty fortune.



plays best costumed in this style:

- ◆ *Thoroughly Modern Millie* by Dick Scanlon, Jeanine Tesori and Richard Morris
- ◆ *Hayfever* by Noel Coward

some representative films:

- ◆ Auntie Mame (1958)
- ◆ Chaplin (1992)
- ◆ Cider House Rules (1999)
- ◆ Cotton Club (1984)
- ◆ The Aviator (2004)
- ◆ The Changeling (2008)
- ◆ Thoroughly Modern Millie (1967)



1930s

◆ This is where fashion history gets dicey everyone thinks they know what that era looks like, and most are WRONG- do your research!!



some
representative
garments:

MEN

foulard
jodhpurs
Oxford bags/ plus fours
polo coat
saddle shoe
slacks
tab collar shirt



some representative garments:

WOMEN

bed jacket
bobbed hair
cardigan
shirtwaist dress
swing skirt
pajamas
windbreaker

pros

1. *Materials inexpensive to build*
2. *Tends to be flowing lines*
3. *Menswear very contemporary in appearance*
4. *Usable items available through vintage shops*
5. *Lots of research available*
6. *Lots of commercial patterns readily available*
7. *Does not require special underwear*
8. *Character shoes very similar to 1930s shoes*



cons

1. *Generally requires wigs for women*
2. *Generally requires haircuts for men*
3. *Clingy-ness of fabrics makes it unforgiving for women*

